

▶ Data Section

Investor Information

(As of March 31, 2017)

Head Office

Nichirei Higashi-Ginza Building 6-19-20 Tsukiji, Chuo-ku,
Tokyo 104-8402, Japan

Corporate Relations:

Tel: 81 (3) 3248-2167 Fax: 81 (3) 3248-2237

Website Address

<http://www.nichirei.co.jp/english/ir/index.html>

Established

December 1, 1945

Paid-in Capital

30,307 million yen

Number of Full-time Employees

14,682 (consolidated)

Stock Exchange Listing

Tokyo Stock Exchange (Code: 2871)

Common Stock

Authorized: 360,000,000 shares

Outstanding: 147,925,532 shares

(Treasury shares: 10,322,296 shares)

Number of Shareholders

18,919

Shareholder Register Administrator

Mizuho Trust & Banking Co., Ltd.
Stock Transfer Agency Division

Annual Meeting of Shareholders

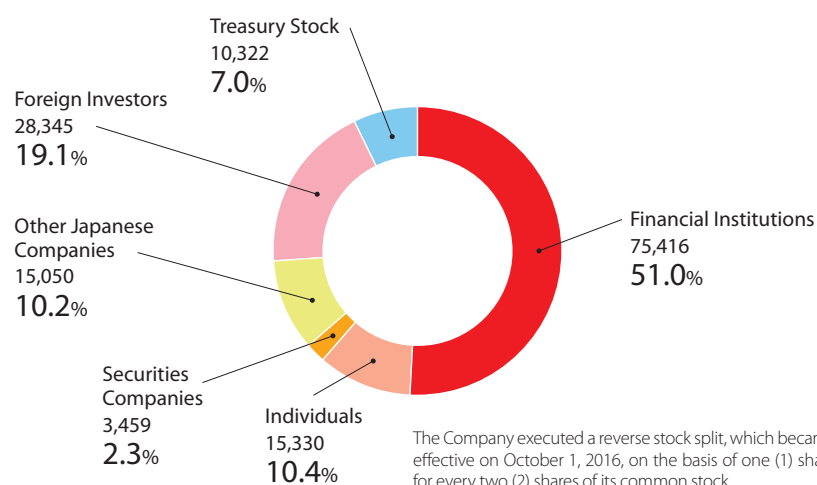
The annual meeting of shareholders
is normally held in June each year
in Tokyo, Japan

Independent Auditors

Ernst & Young ShinNihon LLC

Composition of Shareholders

(Thousands of shares)

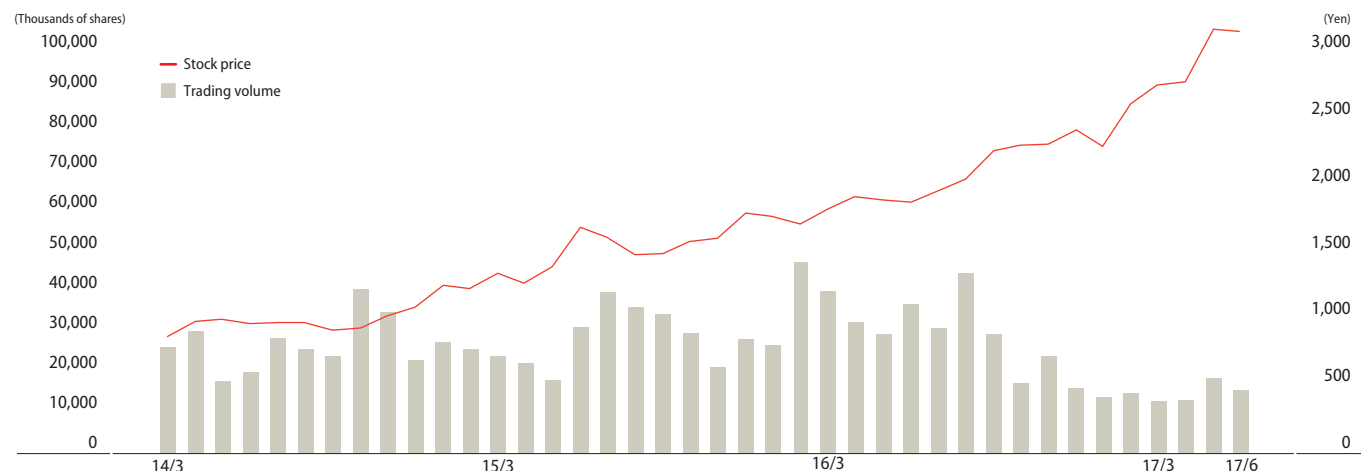


Inclusion in Indices (As of August 2017)

Nichirei is included in several major indices including Socially Responsible Investment (SRI) Indices:

- Nikkei 225 · JPX-Nikkei Index 400 · FTSE4Good Index Series · FTSE Blossom Japan Index
- MSCI Japan Empowering Women Index · MSCI Japan ESG Select Leaders Index

Stock Price and Trading Volume



Note: The stock prices above reflect amounts after the stock consolidation conducted on October 1, 2016. However, trading volume does not reflect the impact of the stock consolidation.