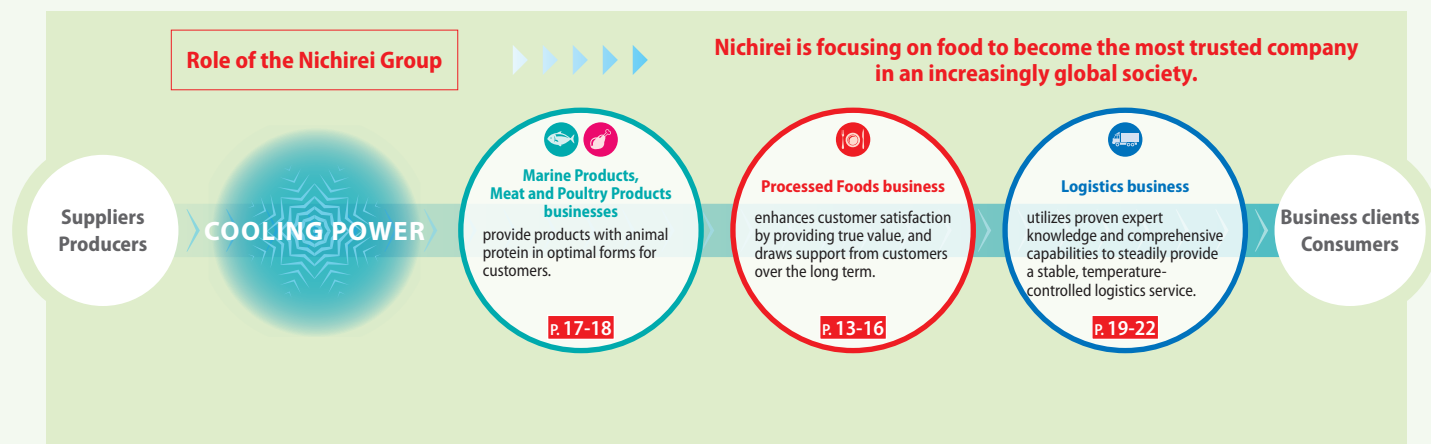


## Maintain a Sustainable Supply Chain

### Basic approach

Maintaining a sustainable supply chain is the foundation for supporting the Nichirei Group's business activities. With the expansion of its operations internationally, the Group's suppliers, customers, and other stakeholders are now spread all over the world. Accordingly, the Group has a social responsibility to manage the entire supply chain from a global standpoint. In order to shift toward this approach, the Group established the Nichirei Group Sustainable Supply Chain Policy in tandem with the Nichirei Pledge, both of which went into effect from April 2017.



#### ● Incorporating the supply chain as an important item in the basic CSR policy

As the world becomes increasingly borderless, it is essential to strengthen supply chains from a global perspective in order to strictly control the quality of goods procured from other countries. When the Nichirei Group renewed its basic CSR policy as the Nichirei Pledge, which went into effect from April 2017, it added “maintain a sustainable supply chain” as one of the core objectives of the new policy. This demonstrated to all members of the Nichirei Group and to the general public that the Group is committed to maintaining a sustainable supply chain, and regards that as a basis for providing safe products and services, the very foundation of its business activities.

#### ● Establishment of the Nichirei Group Sustainable Supply Chain Policy

The Nichirei Group Sustainable Supply Chain Policy was put into effect from April 2017. With the goal of reducing all supply chain-related risks, the Nichirei Group is procuring goods and services in accordance with the policy, and encouraging its suppliers to fully understand the policy and put it into practice.

### Nichirei Group Sustainable Supply Chain Policy

#### Legal compliance

We comply with the laws and social norms of each country and region where we operate.

#### Fair business practices

We employ fair, transparent, and impartial business practices.

#### Human rights

We respect human rights and provide safe, healthy work environments.

#### Environment

We strive to reduce environmental impact and consider the health of the global environment.

#### Product quality and safety

We work hard to deliver safe, high-quality products and services.

#### Information management

We manage information properly and disclose information related to our business activities in a timely, appropriate manner.

#### Local communities

We seek to build close cooperative relationships with local communities, as a good corporate citizen.