

Investor Information (As of March 31, 2020)

Essential Stock Information

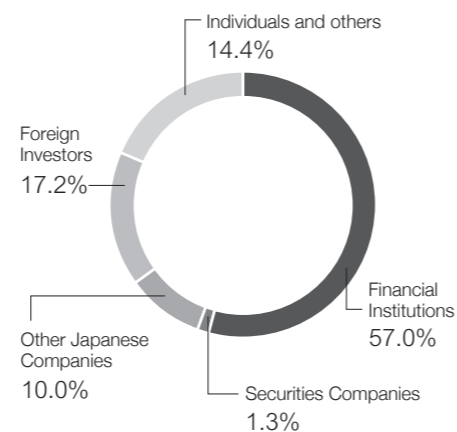
Stock Exchange Listing	Tokyo Stock Exchange (First Section)
Total Number of Authorized Shares	360,000,000 shares
Total Number of Outstanding Shares	139,965,587 shares (including 6,739,790 treasury shares)
Share Unit Number	100 shares
Number of Shareholders	18,918
Shareholder Register Administrator	Mizuho Trust & Banking Co., Ltd.
Annual Meeting of Shareholders	June
Auditors	Ernst & Young ShinNihon LLC

Major Shareholders

Shareholder Name	Number of shares held (Thousands)	Shareholding ratio (%)
The Master Trust Bank of Japan, Ltd. (Trust account)	20,656	15.5
Japan Trustee Services Bank, Ltd. (Trust account)	12,694	9.5
Nippon Life Insurance Company	5,744	4.3
Mizuho Bank, Ltd.	3,813	2.9
MUFG Bank, Ltd.	3,406	2.6
Mizuho Trust & Banking Co., Ltd. Retirement Benefit Trusts, Mizuho Bank Ltd. Account, Re-trust Trustee, Asset Management Services Trust Account	2,799	2.1
Nisshin Seifun Group Inc.	2,719	2.0
The Norinchukin Bank	2,675	2.0
The Dai-ichi Life Insurance Company, Ltd.	2,323	1.7
Japan Trustee Services Bank, Ltd. (Trust account 7)	2,229	1.7

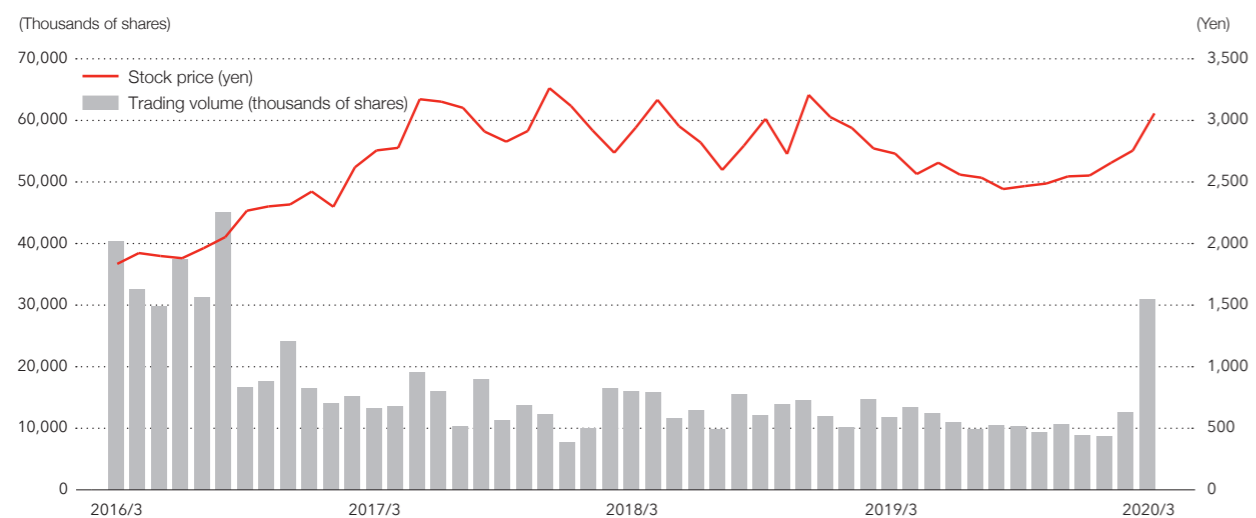
Notes: 1. Number of shares held rounded up to the nearest thousand.
2. Shareholding ratio calculated after subtracting repurchased stock (6,739,000 treasury shares). Rounded off to the first decimal place.

Composition of Shareholders



Note: "Individuals and others" includes "treasury stock (4.8%)."

Stock Price and Trading Volume Trends



Notes: The stock prices above reflect amounts after the stock consolidation conducted on October 1, 2016. However, trading volume does not reflect the impact of the stock consolidation.

Company Information (As of March 31, 2020)

Corporate Data

Company Name	Nichirei Corporation
Established	December 1942 ¹
Paid-in Capital	30,418 million yen ²
Head Office	Nichirei Higashi-Ginza Building 6-19-20 Tsukiji, Chuo-ku, Tokyo 104-8402, Japan
Telephone	[+81] 3-3248-2101 (Main)
Number of Employees (consolidated)	15,824
Business Network	14 countries and areas (in Japan and overseas offices and subsidiaries)

Notes:
1. Date of establishment of the predecessor Teikoku Marine Products Control Company. Reorganized as Nippon Reizo Inc. in December 1945.
2. As of July 22, 2020

External Review

Incorporation of SRI Index (FY2021)

<http://info.msci.com/l/36252/2017-06-27/kj5n9b>

Review/Awards

- The Certified Health and Productivity Management Organization Recognition Program under the large enterprise category (FY2018, FY2019, FY2020, FY2021)

